

The "all new" VisionMenu Elite is the menu you have to see. It was completely designed by The Vision of F & I, Inc. a leader in F&I training. Vision Menu Elite gives the F&I Professional the tool they need to increase profit and ensure compliance. It's infinite menu possibilities and well-designed sales features will translate to more dollars for the dealership

Vision E-Academy comes standard with VisionMenu Elite. You'll receive over 8 hours of results producing online F&I training that will give you the edge you'll need to take your income to the top level.

VisionMenu Elite is simply the menu you have to see!

Versatile

- Completely Customizable Menus
- Cash Conversion Menus
- Lender Caps Menu
- Promotional Menu vs. Installments Comparison

Integration

- Integrates with VSC and GAP lookups
- Integrates with VisionDesk, a selling tool that gives the customer Finance, Lease, and Cash options to maximize both sales and F&I profits

Service

- Our product managers take the time to ensure you get optimal use of your menu.
- We give 100% setup support to ensure that you know how to use your menu tools and the calculations are correct.
- Toll-free customer support

Infinite Menus

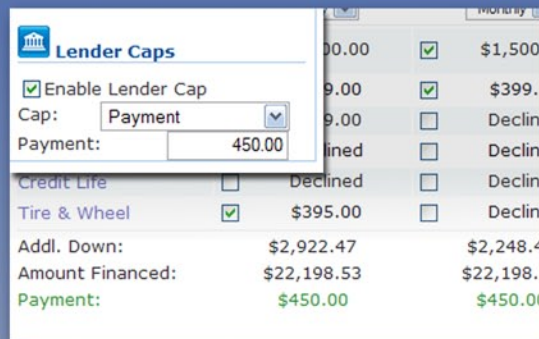
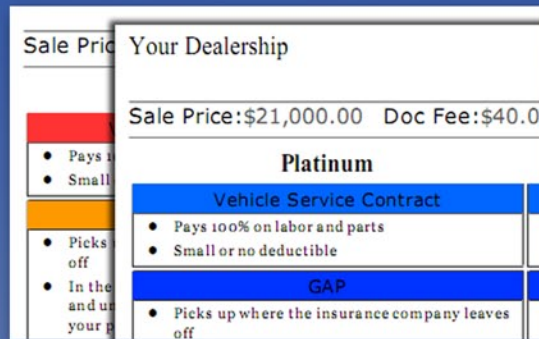
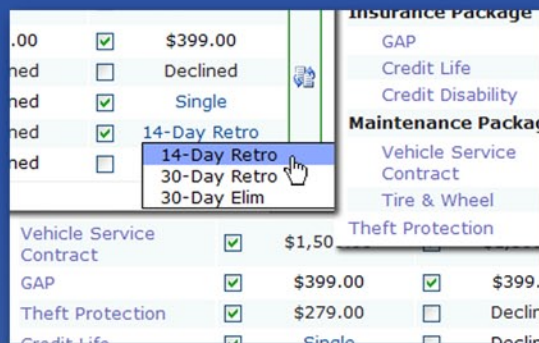
- Build as many menu templates as you like with unique package options, colors, and fonts.
- You'll like the way you can point and click your way to any choice.

OFAC Check

OFAC checks come standard with VisionMenu Elite.

No Limits

There is no limit to our commitment to continually upgrade your menu for high performance and profit opportunities.



www.visionmenu.com
800.413.9902